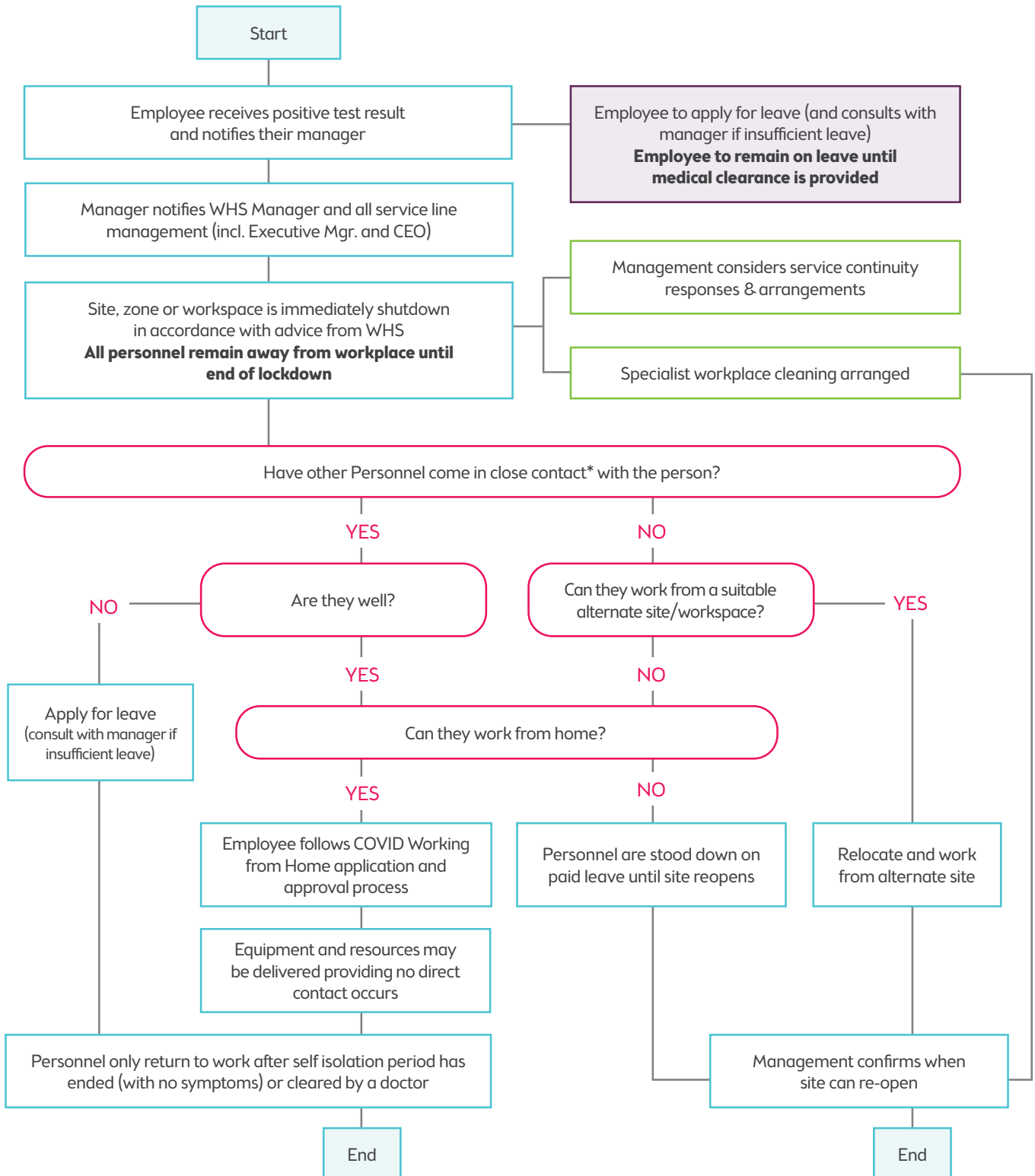


COVID-19 Scenarios and Processes

2. What process do I follow if an employee has confirmed they have tested positive to COVID-19?



*Close Contact' means if the person/s have had a) more than 15 minutes of face-to-face contact (in any setting) with a person with confirmed COVID-19 (incl. in the 24 hrs before their symptoms appeared); b) they have shared a closed space with a person with confirmed COVID-19 for more than 2 hrs (incl. in the 24 hrs before their symptoms appeared).